

# Bridging Innovation

Building pathways to discover, accelerate, and deliver innovation from nontraditional sources

**MITRE**

**SOLVING PROBLEMS  
FOR A SAFER WORLD**

# Solving Problems for a Safer World

## MITRE Operates Six Federally Funded Research & Development Centers (FFRDCs)

Mission-driven in the public interest

Objective & conflict free insight (not-for-profit)

Unique Vantage Point

Technical Know-How

Pioneering Together

Our Mission is to **solve problems for a safer world**. At MITRE, we work across the whole of government on big problems that challenge our nation's stability. We strive to earn the trust of our sponsors and partners so that we may have **greater impact for public good**.

MITRE



# Bridging Innovation

Building pathways to **discover, accelerate, and deliver** innovation from non-traditional sources



Engage with and harness the power of the innovation community by sharing government challenges and identifying solutions



Quickly deliver capabilities to the government by leveraging commercial technologies and reducing acquisition time, cost, and risk



Lower barriers of entry for innovators to rapidly develop and deliver novel solutions across the enterprise



DEFINE

IMMERSE

SCOUT & MATCH

INCUBATE

TRANSITION



Immersing in innovation ecosystems across  
healthcare, financial, space, transportation, public safety, & defense

# Bridging Innovation Partnerships in Innovation Ecosystems

techstars\_

MC | MASSCHALLENGE

MeHI  
MASSACHUSETTS  
eHEALTH INSTITUTE

massrobotics

FEDTECH

MNSBIR INC.™

ATI  
AUSTIN  
TECHNOLOGY  
INCUBATOR  
THE UNIVERSITY OF TEXAS AT AUSTIN

FORGE  
BUILT BY GREENTOWN LABS

STARBURST  
ACCELERATOR



NSIN



STADIA  
VENTURES

CATALYST  
CAMPUS



Greentown  
Labs

FIU  
FLORIDA  
INTERNATIONAL  
UNIVERSITY



The University of Texas at Austin  
Texas Innovation Center

\_NEWLAB

# MITRE's Digital Health Sandbox

contains the tools you need to develop innovative solutions faster and more securely. From realistic synthetic health data to tools for testing and maturing your API to cyber vulnerability testing of medical devices, MITRE's sandbox provides open source tools and expertise behind them to help.

**CYBER  
SAFETY  
LAB**



Securing Medical Devices for Patient  
Safety



**SYNTHEA**

Synthetic Patient Medical Record Generation

**INFERN** 

End-to-End FHIR Use Case Testing and  
Certification

**CDS CONNECT**



Incorporating Evidenced-Based Standards  
into Clinical Practice

**CRUCIBLE**



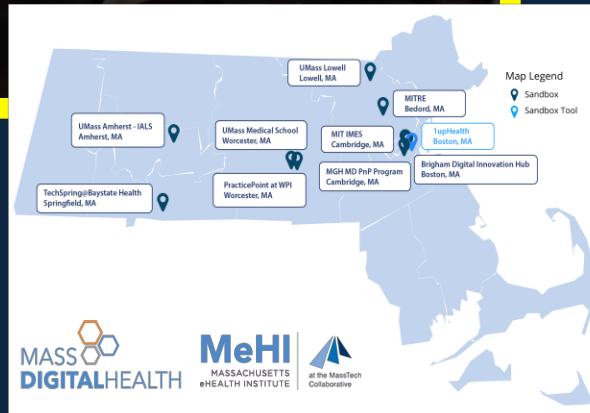
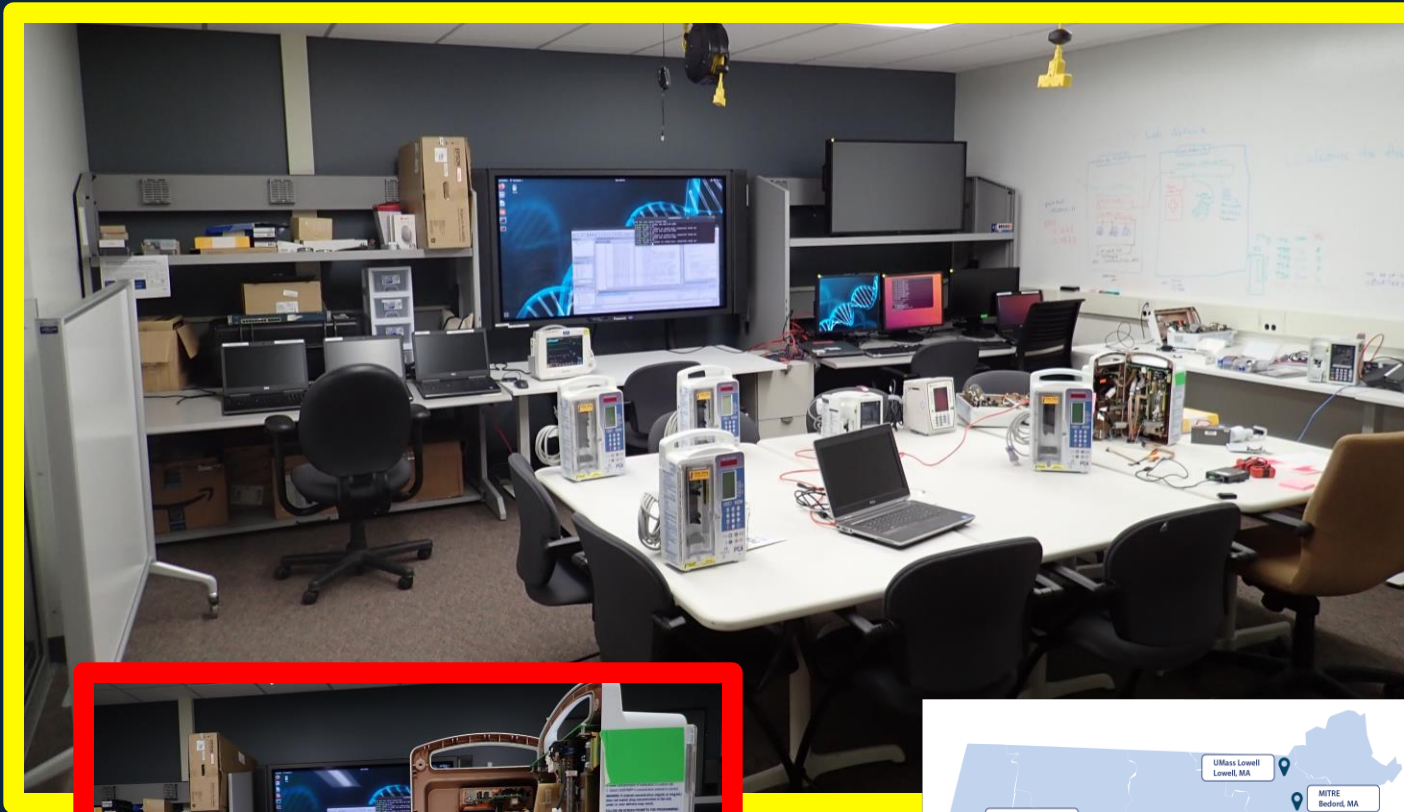
Foundational FHIR Server Testing

**Short**<sup>FHIR</sup> 

Concise Language for Defining FHIR IGs

# MITRE HealthCARE Lab

## Health Cybersecurity and Resiliency Experimentation





Contact Us

[bridge@mitre.org](mailto:bridge@mitre.org) | [bridge.mitre.org](https://bridge.mitre.org)

**MITRE**

**SOLVING PROBLEMS  
FOR A SAFER WORLD**



# Power of Patients



## Introduction



## MISSION:

Help patients & caregivers recover from a Traumatic Brain Injury [TBI] by proactively managing their care.

## GOAL:

Accelerate clinical trials.

# About Us

Power of Patients® is a health tech company



# Why Me?

- 25+ Yrs. Experience in Clinical Trials
- Biostatistician & Epidemiologist
- It's **Personal**





# What was the CHALLENGE

We were tasked to solve

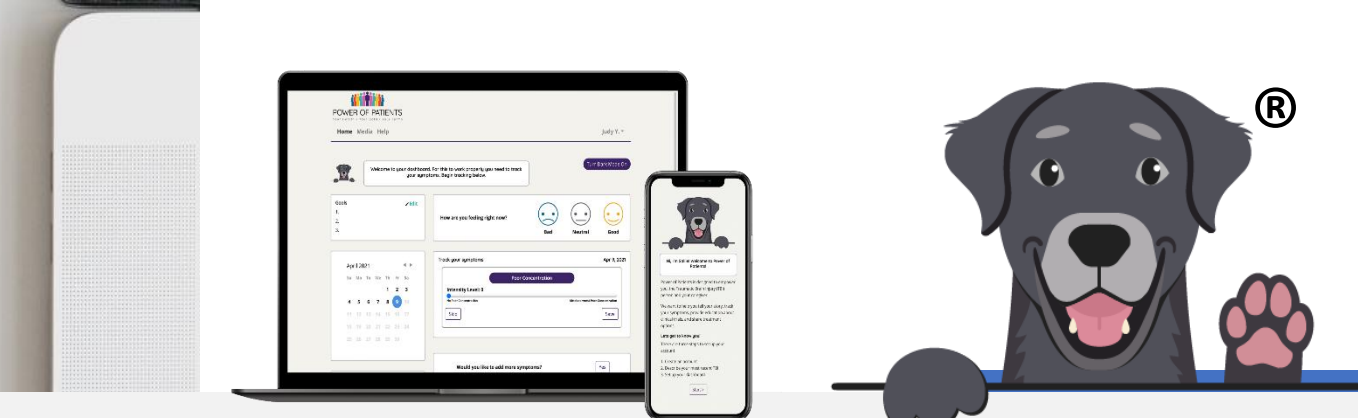
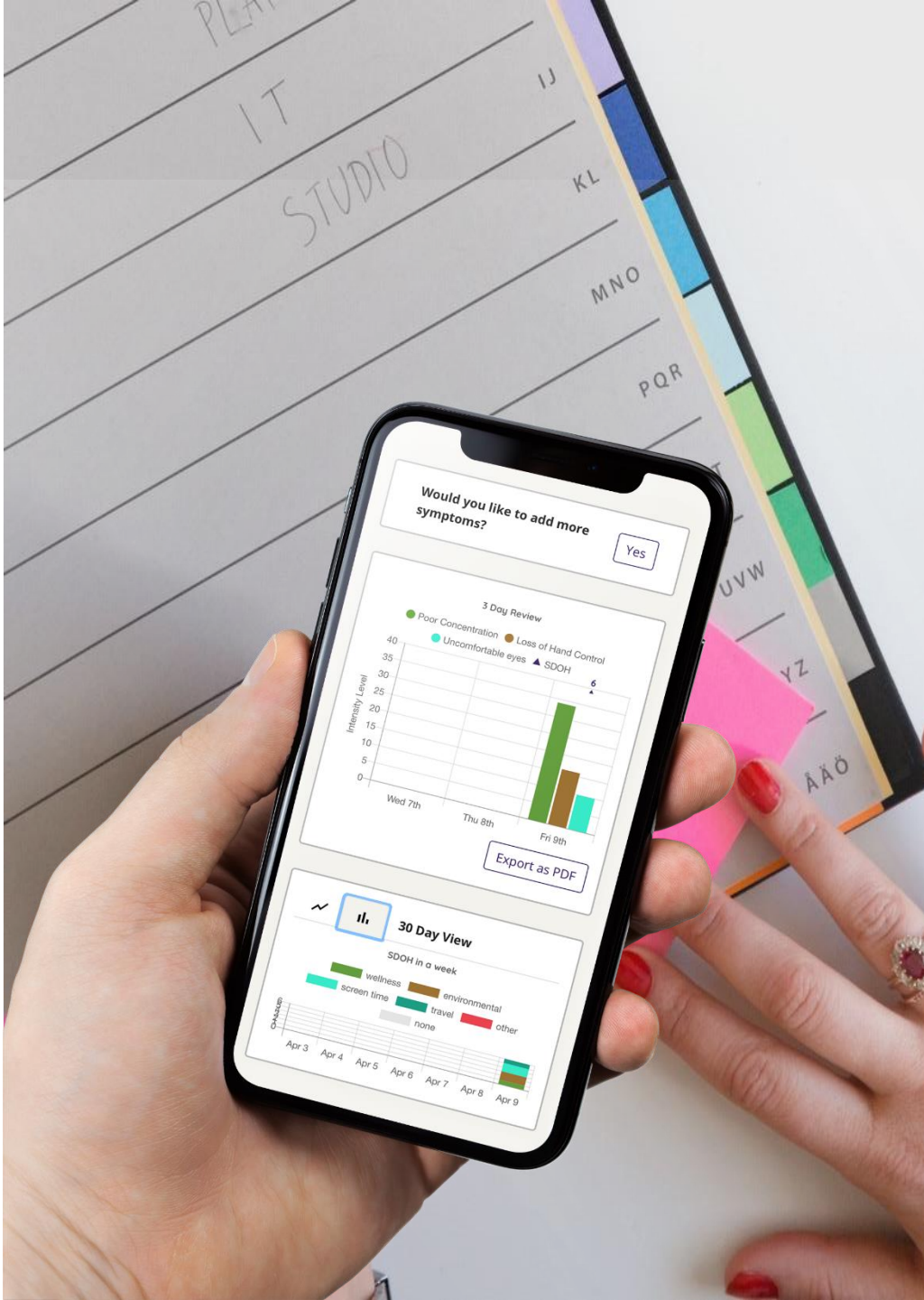




- Covid Cohort Caregivers were now a part of the clinical care team

How could Power of Patients® create bi-directional communication between caregivers & providers?





# Patients are the Solution

Our virtual therapy dog, Sallie<sup>®</sup>, captures missed, unique data.

Our virtual therapy dog, Sallie<sup>®</sup>, guides patients & caregivers to track their condition in real-time, encouraging them to share their data with care managers or providers.

We were half-way there with the design



# Sandbox Partner : MITRE

## Project Objectives

### Develop prototype

- Focus Groups
- Security
- Compliance & Governance



# Lessons Learned From...

# PRE-COMP COLLABORATION

# Lessons Learned

Why do we need pre-competitive collaborations?

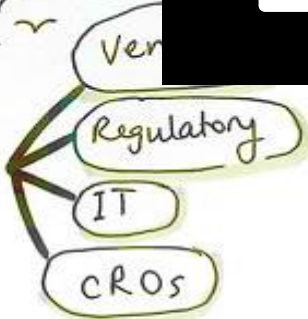
No more low-hanging fruit



Deeply phenotyped patient data

More data available

R+D is less productive in terms of NCEs despite increased spend on R+D

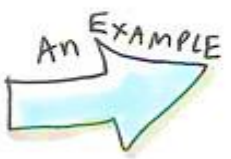


NOTE: pre-comp stuff requires a lot of GOVERNANCE + COMMITMENT

Don't be naïve it takes work!

BI is involved in **IMI PROJECTS**

& other pre-comp initiatives too....



**U-BIOPRED**  
Unbiased biomarkers for the prediction of respiratory diseases

We couldn't have done this project on our own!



**eTRIKS**

- ✓ A sustainable infrastructure is **ESSENTIAL**
- ✓ And integration in **INTERNAL INFRA** in your company

@jennifercham

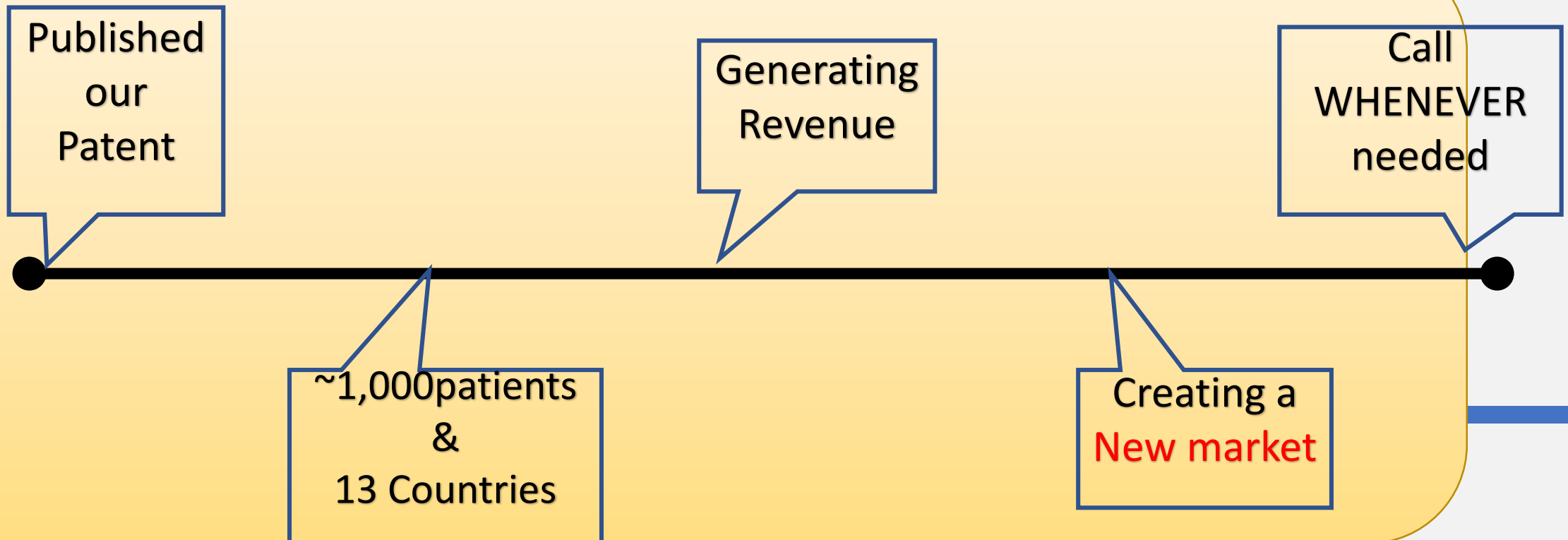




# Where are We headed?

## NEW MARKET

- Redefine Caregiving into Care Managing
- Policy Alignment
- Respite Care







# Thank You

Lynne Becker



+1 843-817-2530



lynne@powerofpatients.com



www.powerofpatients.com





To learn more about Kinto, please visit [their website](#)  
or contact Duncan Pettigrew at [duncan@kinto.care](mailto:duncan@kinto.care)